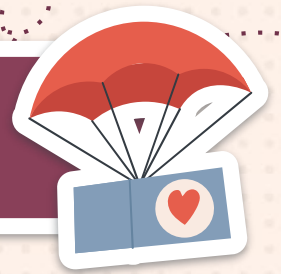


# Partnering for Eternity 24-25

9<sup>th</sup>-12<sup>th</sup> grade



# What is PFE about?



## Helping others

To those who need assistance.

## Be committed

To visiting your mentor once a week for two hours.

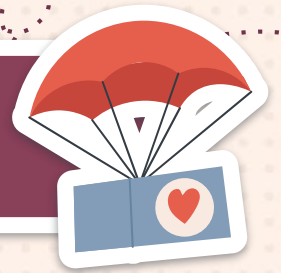
## Be Creative

Think of new things to do together.

## Building a Relationship

With your mentor that will have an everlasting impact.

# How PFE Works



1

Attend  
orientation

Parent and student must attend in-person.

2

Commitment  
Form

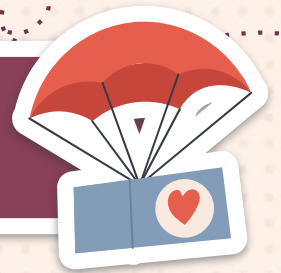
Must be completed BEFORE creating an application.

3

Set-up your  
online account

Submit your Student Application online. (please refer to page 6).

# How PFE Works



4

Start  
Visitation

Visits can begin August 18, 2024 through May 9, 2025, ONLY if you are approved.

5

Visitation  
Rules

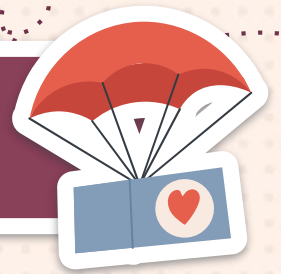
2 hours per visit, once per week.  
Hours cannot be combined.  
Visits must occur at mentors home.

6

Parent/Guardian  
Supervision

Decide whether or not you will visit with your child. Transportation to/from visit is PARENT/GUARDIAN responsibility.

# How PFE Works



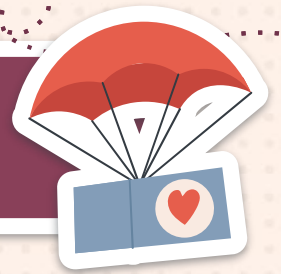
6

Submit  
Reflection

Must be completed online within 24 hours of your visit, or it will be denied.

**There is limited space available, once we run out of room you will be placed on the waiting list. We highly recommend you complete the Commitment Form and Student Application in FULL otherwise it will not be accepted.**

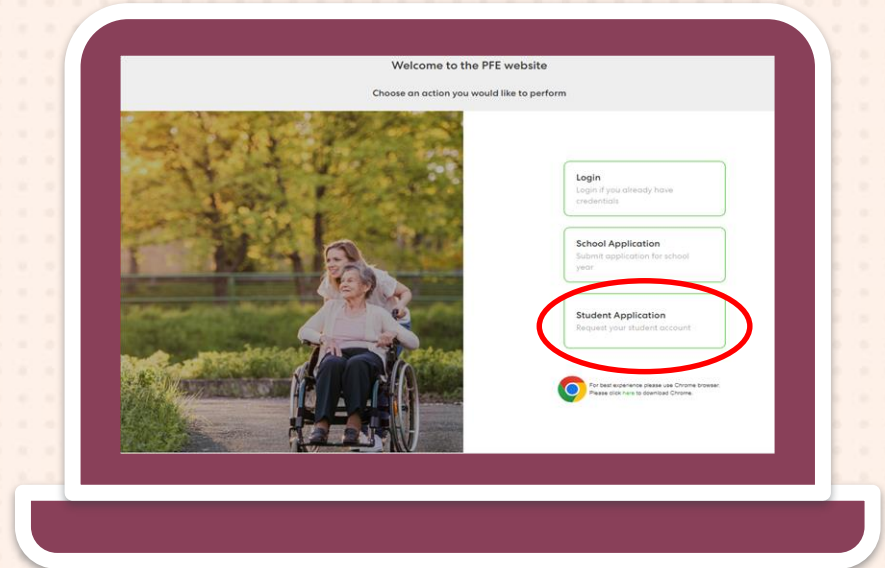
# Setting Up Your Student Application



Go to [www.pfe.sffcfoundation.org](http://www.pfe.sffcfoundation.org)

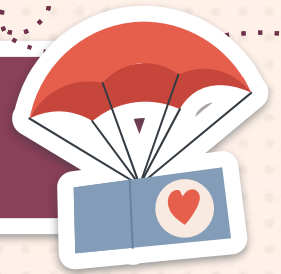
Click on **Student Application** and follow the prompts.

The PFE Coordinator will review your account. You will be notified by email regarding the approval status.



For detailed instructions, please refer to your handout in the packet.

# How Each Term Works



## Complete 1 Qualifying Unit per week:

- 1 QU = 2 service/visit hours
- Must provide 2 hours of service or visitation with your mentor.
- Submit reflection online within 24 hours at the end of your visit.

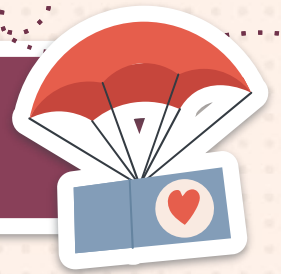
## You must complete 14 QU's each term:

- August 18, 2024, through December 31, 2024.
- January 1, 2024, through May 9, 2025.
- Only 1 QU allowed per week.

I will consistently review your reflections, providing feedback as needed. **If your visits are not submitted within 24 hours, your reflection will be denied.** This is mandatory from the PFE Foundation.



# Scholarship Tuition Amount



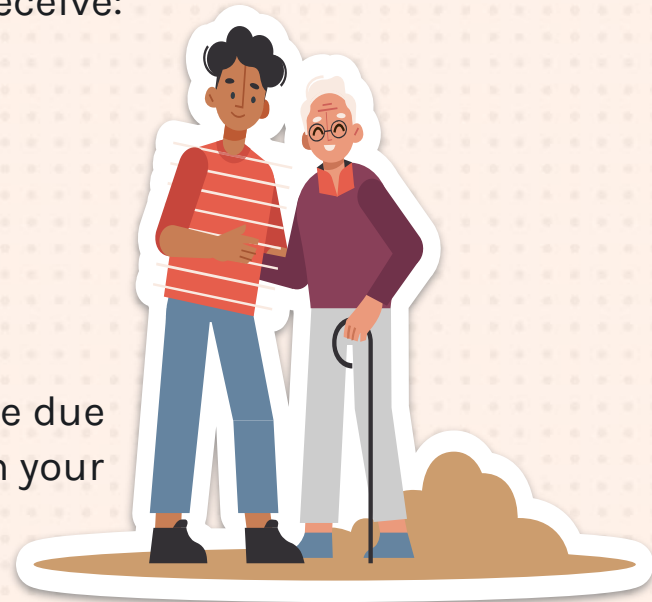
If you complete ALL 14 QU's completed in a term, you will receive:

- \$800 tuition scholarship

Funds will post to your account in:

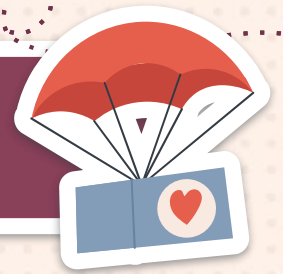
- January 2025 - Term one
- May 2025 - Term two

You will be responsible for paying your tuition in full by the due date, 10th of each month, until PFE credits are reflected on your account so that you don't incur any late fees.





# Choosing a Mentor



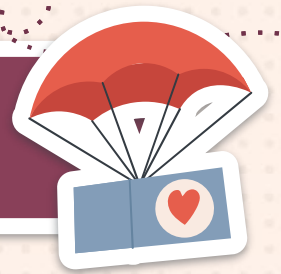
An appropriate mentor is a cognitively healthy, older adult (suggested: retirement age) or someone with a disability who could use company and/or light assistance around the home.

- With whom you can form a relationship
- Who has healthy cognitive capabilities (no Alzheimer's or dementia)
- Who might be lonely and needs company
- Who might have similar interests or hobbies
- Who can commit to a Two-hour visit, once per week for the entire school year.



**NO RELATIVES OR NURSING HOME RESIDENTS ALLOWED**

# Visiting Your Mentor

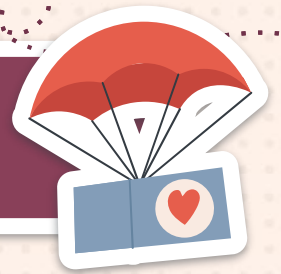


Visits can start only if you completed the following:

1. Attended Parent/Student Orientation
2. Complete the Commitment Form
3. Submit your PFE Student Application
4. Finish setting up your PFE Student account online *(only if you are approved)*
5. Communicate with you mentor and schedule your visits.



# Parents / Guardians Responsibility



Parents/Guardians:

La Sierra Academy and Partnering for Eternity will not find a mentor for you; this is your responsibility.

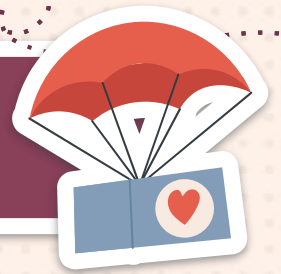
You are responsible for deciding whether your child(ren) should attend visits.

This responsibility does not fall under La Sierra Academy or Partnering for Eternity. Ultimately, you are accountable for your child's safety.

If you have any concerns while your child is visiting their mentor, communicate with your PFE Coordinator immediately.



# Missed Visit



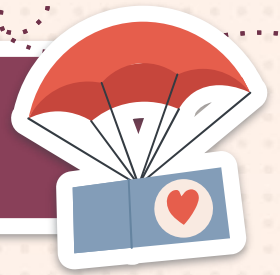
Unfortunately, you are unable to make-up a missed visit with your mentor.

It is crucial that you complete all 14 visits per quarter:

- August 18 2024 through December 31, 2024
  - *This timeframe gives you 20 weeks to complete 1 visit per week (14 visits)*
- January 1, 2024 through May 9, 2024
  - *This timeframe gives you 18 weeks to complete 1 visit per week (14 visits)*

It is recommended that your child(ren) start their visits as soon as possible. This will allow you some flexibility in case your mentor or child(ren) are unable to visit. Starting early ensures that you can meet the full requirement of 14 visits and receive the \$800 PFE tuition credit.

# Activity Suggestions



**Help with chores**



**Bake or cook**



**Crafts or Art**



**Tell stories**



**Exercise or go on  
a walk**



**Gardening**



**Sing or play an  
instrument**

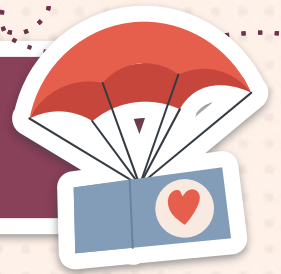


**Play games**



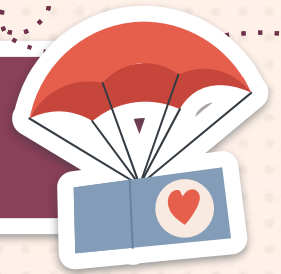
# Unacceptable vs Acceptable

## Activities/Visits



<b>UNACCEPTABLE</b>	<b>ACCEPTABLE</b>
Virtual visits (Zoom, phone calls)	In-person visits
Visits on Sabbath (no Saturday visits)	Sunday through Friday only
No television, PS5, or electronic devices	Must interact with your mentor
Visits with a different mentor	Must remain the same mentor all year
Spending the night at your mentors home	Visit your mentor only
School, church, other functions	Scheduled visit at their home

# Submitting Your Reflection



You are required to login to your account and submit your online reflection at the END of your visit or within 24 hours.

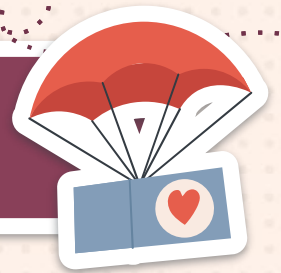
It is YOUR responsibility to submit your reflection on time.

Reflection platform is mobile friendly for iOS.  
\*Android app should be available in November 2024.



Scan QR Code to download iOS app.

# Submitting Your Reflection - continued



Students and Coordinator will receive an email notification each time you submit a reflection transaction.

You must be detailed when you are submitting your reflection.

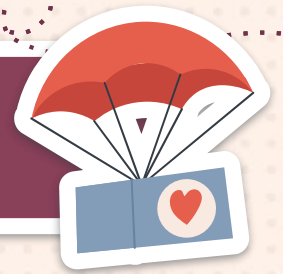
This is how the PFE Administration and I, can understand your visit/service with your mentor.

The PFE Foundation and Coordinator will read your reflections.

A screenshot of a login form titled "Login" with the instruction "Please enter your credentials to login". It features two input fields: "Email" and "Password". Below the "Email" field, a red error message reads "The Email field is required". Below the "Password" field, a red error message reads "The Password field is required". There is a checkbox labeled "Remember me" and a link "Forgot password?". A green "Submit" button is at the bottom.



# Fundraisers



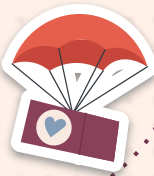
PFE participants are required to help raise 30% of the PFE scholarship funds.

What is the 30% of the scholarship fund mean?

- You will receive \$800 for completing all 14 visits.
- PFE foundation will fund 70% = \$560
- We must raise 30% = \$240
- 15 students enrolled (9<sup>th</sup>-12<sup>th</sup> grade) x \$240 = \$3,600 MUST be raised per quarter

This means, all participants are **REQUIRED** to help for each fundraiser.

If you are unable to participate for an event, please contact me.



## Used Uniform Store

A sign-up sheet will be sent out.

Participation to help set-up and monitor the store for 1 hour on a Friday.



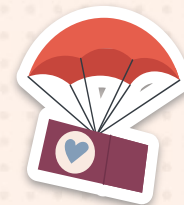
## Harvest Festival

Sunday, October 27

PFE will have a Corn in a Cup Booth.

Donations and participation will be needed.

Will need 1-2 volunteers to take lead.



## 5k Bubble Run

Sunday, March 9, 2025, at 12:00 P.M.

Donations and participation will be needed.

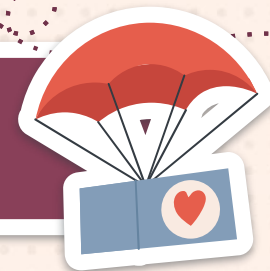
Will need 1-2 volunteers to take lead.

Each family will be required to sell tickets.



**There will be another fundraiser. More information to follow.**

# Helpful Resources



Commitment Form



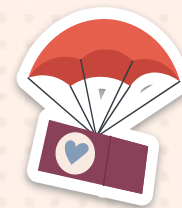
PFE  
Student Application



Apple iOS



# Staying Connected



Partnering for Eternity  
Group

# Thanks!

If you have any questions, please contact me at [Isa.pfe@lsak12.com](mailto:Isa.pfe@lsak12.com)

I will respond by the next business day.

Thank you,  
*Cynthia Garcia*  
PFE Coordinator

